



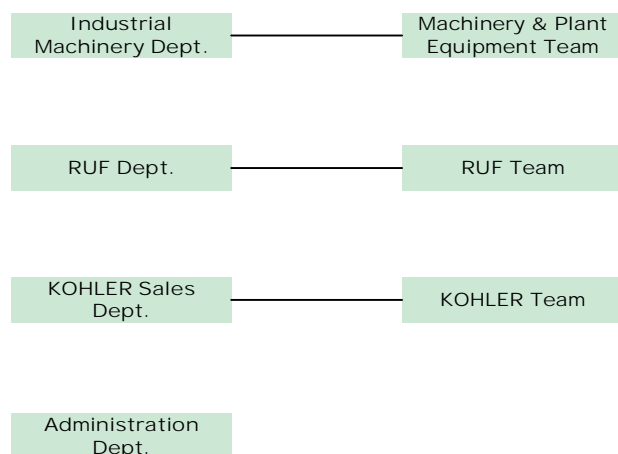
Corporate profile

Company name NIPPON STEEL TRADING MATEX CO., LTD.  
 Established Oct. 2004  
 Headquarter Address Osaka AsahiSeimeikan 4-2-16, Koraibashi Chuo-ku, Osaka 541-0043 Japan  
 TEL: 06-6228-8822 / FAX: 06-6228-8829  
 Board Member President: Mr. Shinji Otsu  
 Director: Mr. Yoichi Kimura  
 Mr. Manabu Hatakeyama  
 Mr. Isamu Ooka(Part-time)  
 Auditor: Mr. Hideyuki Tsukioka(Part-time)  
 Capitol 50 Million JPY  
 Annual sales 4.3 Billion JPY.(Fiscal year 2024)  
 Number of Employees 31

Corporate history

March,1991 Established "Sumikin Bussan Techno Sales Co.,Ltd." in order to expand Machinery sales.  
 March,2002 Acquired ISO14001 certificates  
 October,2004 Sumikin Bussan Machinery Co., Ltd. Sumikin Bussan Corporation Machinery and Equipment Division, and Sumikin Bussan Techno Sales Co., Ltd. have integrated to one new company as "Sumikin Bussan Matex., Ltd."  
 October,2013 The company name was changed to "Nippon Steel and Sumikin Bussan Matex Co., Ltd."  
 March,2014 RUF Technical Center has relocated to Shinkiba, Tokyo.  
 July,2016 Opened KOHLER SHOWROOM at Shinbashi, Tokyo.  
 August,2017 Head Quarter has relocated to Koraibashi, Chuo-ku, Osaka city.  
 April,2019 The company name was changed to "Nippon Steel Trading Matex., Ltd."  
 December,2022 KOHLER Shinbashi showroom closed.  
 February,2023 KOHLER Sales Department moved to Tokyo Branch.

Organization chart



Domestic locations

Osaka Head Office

Osaka AsahiSeimeikan 4-2-16, Koraibashi Chuo-ku, Osaka 541-0043 JAPAN  
 TEL: 06-6228-8822(Head office switchboard)  
 FAX: 06-6628-8829(Head office common)  
 ♦Machinery & Plant Equipment Team  
 TEL: 06-6228-8824  
 ♦Administration Dept.  
 TEL: 06-6228-8823

Tokyo Branch

1-1-7, Shinkiba, Koto-ku, Tokyo 136-0082 JAPAN  
 TEL: 03-6363-8850(Tokyo branch switchboard)  
 FAX: 03-3522-8712(Tokyo branch common)  
 ♦RUF Technical Center  
 TEL: 03-3522-8711  
 ♦KOHLER Sales Dept.  
 TEL: 03-6311-6401

Overseas Locations

North America

NIPPON STEEL TRADING AMERICAS, INC.  
 【Chicago Headquarter】  
 200 North Martingale Road Suite 801, Schaumburg, Illinois 60173, U.S.A.  
 【SB Machine Tools office】  
 841 Busse Road, Elk Grove Village, Illinois 60007, U.S.A  
 TEL: +1-(847)882-9600 / FAX +1-(847)640-0740

Located at Chicago suburb, we are providing different customer needs Such as automotive parts machining, energy related equipment machining solutions, and various types of machine tools sales and services.



**NIPPON STEEL TRADING MATEX CO., LTD.**



# Aiming to contribute to our customers By creating high dense value-added group.



## Foreword

We aim to contribute to our customers by providing high value-added products and services, utilizing the networks and resources of the Nippon Steel Trading Group.

Make new value together with customers.

Contribute to the society respecting fairness and safety.

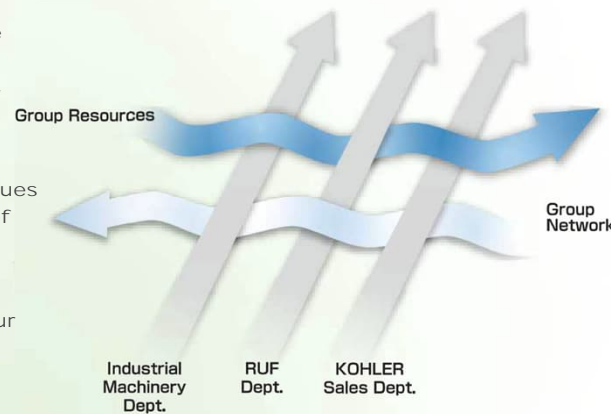
By team power, we will realize our commitment

Our business fields include domestic sales of superior industrial machinery, equipment, and materials for industries such as automotive aircraft, LCD semiconductor, energy, and infrastructure from Japan and overseas, as well as maintenance and consumable materials that support the safety and efficiency of these products, and we also have sales channels in Europe, North America, and other countries.

as a member of the Nippon Steel Trading Group, each one of us values the trust and confidence of all stakeholders, realizes a high level of contribution to our business partners, and aim to grow together.

We are committed to further improving quality of our operations and services to meet your expectations, and we look forward to your continued support.

President SHINJI OTSU



## RUF Dept.

We sell German manufacture, RUF made briquetting system to the Japanese market as a sole agent for more than 30 years. We can briquette metal chips, grinded chips, paper dusts, wooden chips and almost anything. We also offer manufacturing functions including system up and installed more than 400 machines sole to the Japanese and other markets.

### Recycle related equipment

RUF(Germany) Briquetting machine



RUF(Germany) Briquetting machine

## KOHLER Sales Dept.

### KOHLER Brand Bath, Kitchen and Lavatory products

We provide KOHLER brand products especially well known for decent design, quality, color variation TOP brand plumbing fixture manufacturer. KOHLER is always challenging making products with new ideas and also contributing to Environmental Protection Agency's leading called "water sense".



## Industrial Machinery Dept.

Take advantage of specialized trading company's mobility, we appreciate our relationships with customers and perseure the way to grow up together domestically and internationally.

### Steel and non-ferrous facilities Machine tools

With our long history of supplying equipment and materials to iron making industries, we sell equipment, materials, automotive parts machining tools, various testers, individual and line equipment for plants, domestically and internationally including off-shore trade.

For machine tools, we mainly sell Japanese multi spindle CNC lathe, Horizontal boring mill and Middle to Large class lathe to North American and European markets. Multi spindle CNC lathe has many installation histories for automotive industry's mass production use and Horizontal boring mill sale location in Chicago, IL. Providing installation service, commodity sales and maintenance service. In Europe, we have each different reliable partner at different countries and satisfying customer's needs.



Horizontal boring/milling machine (NOMURA Machine Tool Works Ltd.)



Multi spindle CNC lathe (Shimada Machine Tool Drivers Co., Ltd.)

### Surveillance camera

We treat DAHUA products, the world's top market share in the field of surveillance cameras, and other manufacturer's vehicle number authentication systems and gate systems used in corporate parking lots.

### Extrusion Shapes Equipment

Prezezi Extrusion S.p.A. (Italy) focuses on extrusion presses to produce extruded shapes such as aluminum and copper, including forging equipment.

The company is capable of providing all the equipment necessary for a "full" extrusion line", including forging equipment. We offer a wide range of products, including the Z.P.E. magnetic heater, an innovative, energy-saving aluminum billet heating system. We also design and manufacture state-of-the-art extrusion presses that are highly rigid, top quality, and energy efficient, as well as profile cooling systems and rear-end equipment.

We always looking forward the future to help customers improve the efficiency, quality and energy efficiency of their extrusion profiles production lines.

We support our customers by providing quick and effective solutions.



Extrusion Press



Z.P.E. Magnetic Heater



Extrusion full-line Layout

We sell World-Top-Share Mitsubishi Diamond Industrial Co., Ltd.'s liquid crystal basement glass cutting equipment as an agent. And also selling other equipment and materials to big manufactures in Flat Panel Display (FPD) industry domestically and internationally. Glass cutting equipment are used in the process of manufacturing LCD TVs, displays of such PC, Cell phone, car navigation and many other. We also develop vulnerable material cutting other highly accurate cutting and variant shape cutting needs other than FPD glasses.

Automatic precision glass scribe equipment [MM series]

Extra large LCD panel cutting line equipment [VSS series, MPL series]

Variant shape cutting equipment/break equipment/other cutting tools

[MMP series, MB series]

Glass grinding equipment Glass edge application equipment



Liquid Crystal Cutting Line for the 8<sup>th</sup> generation (2000mm×2000mm)